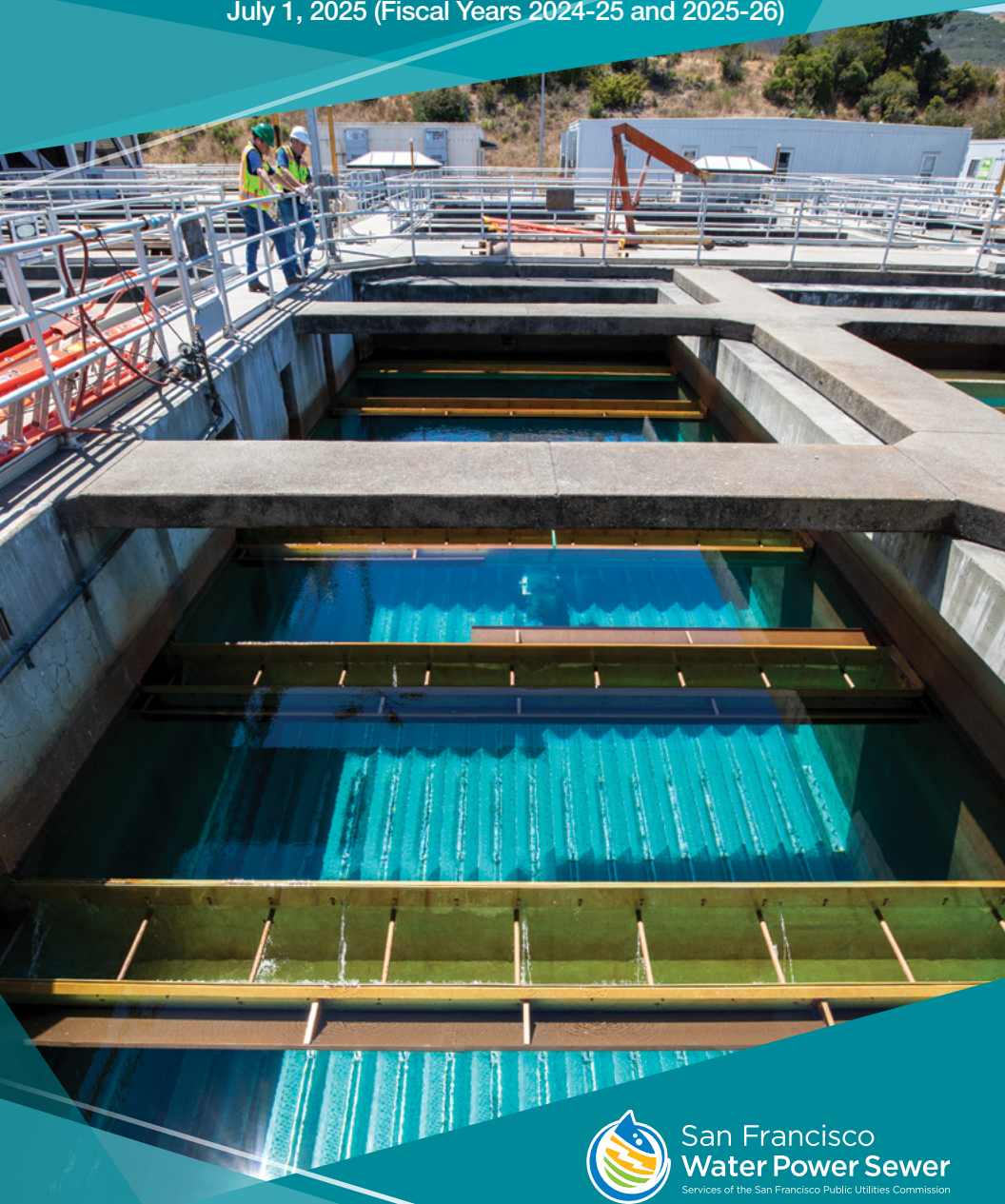


RATE SCHEDULES & FEES for Water and Sewer Service

Effective with meter readings made on or after
July 1, 2024 (Fiscal Year 2024-25),
July 1, 2025 (Fiscal Years 2024-25 and 2025-26)



San Francisco
Water Power Sewer
Services of the San Francisco Public Utilities Commission

RATE SCHEDULES & FEES **for Water and Sewer Service**

Effective with meter readings made on or after

**July 1, 2023 (Fiscal Year 2023-24), July 1, 2024 (Fiscal Year 2024-25),
and July 1, 2025 (Fiscal Year 2025-26)**



San Francisco
Water Power Sewer

Services of the San Francisco Public Utilities Commission

Table of Contents

Introduction	i
Your Dollars at Work.....	i
Retail Water and Sewer Rates, Charges, and Fees	ii
Rate and Fee Changes	ii
Water Rate Structure	ii
Sewer Rate Structure.....	ii
Drought Surcharge and Conservation	iii
Water and Sewer Rate and Fee Resolutions	iii
Manage your Account	iv
Bill Relief	iv
Definitions	v
Water Rates Schedules	1
Customer Classification.....	1
Class Determination	1
Change in Classification	1
Schedule W-1A: Single-Family Residential Service	2
Schedule W-1B: Multi-Family Residential Service.....	3
Schedule W-1C: Commercial, Industrial, Public, and General Uses.....	4
Schedule W-2: Fire Service.....	6
Schedule W-4: Docks and Shipping Supply within the City and County of San Francisco.....	7
Schedule W-5: Hydrant Use for Temporary Water Supply	8
Schedule W-24: Untreated Water Service	9
Schedule W-25: Wholesale Use with Long-Term Contract.....	10
Water Drought Surcharge	11
Wastewater Rates Schedules.....	12
Customer Classification.....	12
Class Determination	12
Change in Classification	12
Unmetered Service	12
Schedule A: Residential Wastewater.....	13
Schedule B: Non-Residential Wastewater	14
Schedule C: Standard Stormwater	16

Schedule D: Simplified Residential Stormwater 17

Wastewater Drought Surcharge 18

Capacity Charges 19

 Water Capacity Charge 19

 Wastewater Capacity Charge 20

Water Service Connection and Miscellaneous Fees 22

 Schedule W-40: Meter Resizing. 22

 Schedule W-41A: Water Service Installation Fees. 23

 Water Installation Service Charges for Single Service 23

 Water Installation Service Charges for Multiple Services. 24

 Additional Fees for Water Service Installations on Regulated Streets 25

 Schedule W-41B: Water Service Connection Fees 26

 Schedule W-42: Meter and Service Relocations. 27

 Schedule W-43: Flow Restricting Installations. 28

 Schedule W-44: Billing and Service Fees. 30

 Schedule W-45: Land Use and Facility Rental and Use Fees31

 Schedule W-46: Water Enterprise Regulatory Compliance Fees 32

Introduction

Every day, the San Francisco Public Utilities Commission (SFPUC) delivers high-quality water to 2.7 million Bay Area customers, protects the environment and public health by treating wastewater and stormwater, and generates clean energy for San Francisco residents and businesses. Our mission is to provide our customers with high-quality, efficient, and reliable water, power, and sewer services in a manner that values environmental and community interests and sustains the resources entrusted to our care. Learn more at sfpuc.gov.

As a not-for-profit public utility, our rates reflect the true cost of operating, maintaining, and upgrading our water, sewer, and power systems. This Rate Schedules and Fees document for Water and Sewer Services are a compilation of all rate schedules and fees charged to customers of the SFPUC.

Your Dollars at Work

The SFPUC is committed to providing customers with safe, reliable, and affordable drinking water and a combined sewer system that reduces flooding and protects the environment from pollution. These systems require ongoing maintenance and upgrades. Many parts of the SFPUC water system are nearly 100 years old, and the oldest parts of the sewer system date back to the Gold Rush. We need to continue to maintain and upgrade aging systems to prevent breaks, meet regulatory requirements, improve seismic safety, and adapt to storms as the climate changes. Your dollars pay for essential services and projects that protect public health.

The work performed by the SFPUC is almost exclusively funded by rate payer dollars and with this in mind, SFPUC is committed to setting rates that are cost-effective and equitable for our customers. Staff across our agency are proactively addressing the challenges our communities face in all areas of our work – climate change, improving seismic safety; regulatory requirements; making essential improvements to our complex infrastructure to ensure the long-term reliability of vital public assets; and, tackling affordability challenges head on by working to make utility services more affordable for communities that have faced systematic barriers and for customers experiencing financial hardship. Your dollars pay for essential services and projects that help ensure our systems 24 hours a day, 7 days a week.

Retail Water and Sewer Rates, Charges, and Fees

Rate and Fee Changes

In May 2023, the Commission approved three years of water and wastewater service rates for the fiscal years 2023-24, 2024-25, and 2025-26. Rates, charges, and fees for FY 2024-25 and FY 2025-26 will become effective July 1, 2024 and July 1, 2025, respectively.

Water Rate Structure

The water rate structure of the SFPUC is made up of two components:

- (1) a fixed monthly service charge based on meter size and
- (2) a variable charge based on water volumetric usage

The variable charge for residential customers is a two-tier rate structure, while non-residential customers are charged a uniform commodity rate.

Sewer Rate Structure

The sewer rate structure of the SFPUC is made up of three components:

- (1) a fixed monthly sewer service charge.
- (2) a variable wastewater rate based on assumed percentage of metered water usage returned to the sewer system.

Single-family and multi-family residential variable charges are based on a flat rate per discharge unit, calculated from the rate components assuming domestic strength sewage. Non-residential customers are charged unique rates for discharged flows as well as sewage loading (Chemical Oxygen Demand, Total Suspended Solids, and Oils & Grease). The loading rates charged are based on the customer's business type.

- (3) a fixed monthly stormwater component based on the property size and/or parcel characteristics.

The Stormwater component of the sewer bill is assessed on a "simplified" three-tiered structure for residential customers, based on the net parcel size, with smaller parcels being assessed a lower charge that gradually increases for larger parcels. Non-residential, mixed-use, and large residential parcels (over 6,000 square feet or with more than six dwelling units) would be assessed using a "standard charge" based on their total permeable and impermeable surface area.

Drought Surcharge and Conservation

The SFPUC may implement a temporary drought surcharge to cover its operating costs in the event of a declared water delivery reduction that results in decreased water sales. This would apply to the volumetric portions of both water and sewer rates (not to the monthly fixed service charge or stormwater component). The Commission will activate the temporary drought surcharge when it imposes delivery reductions per the Retail Water Shortage Allocation Plan and for either voluntary or mandatory water reduction. At that time, SFPUC will estimate the revenue reduction resulting from water use savings, as well as the surcharge to retail rates necessary to meet the revenue requirement based on lower water sales. The Commission will remove the temporary surcharge when the water use reductions are lifted, per the Retail Water Shortage Allocation Plan.

Water and Sewer Rate and Fee Resolutions

The SFPUC Water and Sewer rates were approved by the following resolutions:

[22-0044](#), approved February 22, 2022. Memorialized Customer Assistance Program.

[23-0074](#), approved on April 11, 2023. Implemented Changes to the Water and Wastewater Customer Assistance Program.

[23-0103](#), approved on May 23, 2023. Adopted three-year schedule of rates for retail water service in San Francisco and suburban areas (FY 2024 – FY 2026).

[23-0104](#), approved on May 23, 2023. Adopted three-year schedule of rates for sewer service in San Francisco (FY 2024 – FY 2026). Stormwater credits are available to customers who install green infrastructure projects to manage runoff from their property.

[23-0105](#), approved on May 23, 2023. Adopted rules and regulations for stormwater credit program.

[24-0090](#), approved on April 9, 2024. Adopted Water Miscellaneous Fee schedules.

[24-0091](#), approved on April 9, 2024. Adopted Wastewater Miscellaneous Fee schedules.

[24-0115](#), approved on May 14, 2024. Adopted FYE 2024-25 Wholesale Water rates.

Manage Your Account

Sign up for My Account to see your water usage at

www.myaccount-water.sfpuc.gov.

Bill Relief

Visit our website, www.sfpuc.gov/learning/conserve-water to learn about ways to save water and money through our water conservation programs.

For information on the Water and Wastewater Customer Assistance Program: www.sfpuc.gov/accounts-services/bill-relief/customer-assistance-program-waterwastewater

Stormwater Component

More information about our Stormwater Component can be found on our Stormwater landing page, <https://www.sfpuc.gov/accounts-services/water-power-sewer-rates>.

This website includes background information about the charge, a bill calculator, and resources available to customers interested in reducing their stormwater component.

Definitions

For this Schedule, the following definitions shall apply unless the context specifically dictates otherwise.

“City”

The City and County of San Francisco.

“COD”

Chemical Oxygen Demand (COD) is a quantitative measure of the amount of oxygen required for chemical oxidation of carbonaceous materials in wastewater using a strong chemical oxidant such as chromic acid (H₂Cr₂O₇).

“Commission”

The San Francisco Public Utilities Commission.

“Customer”

Any person, firm, corporation, partnership, trust, or any other entity including, but not limited to, local, state, and federal governments utilizing the services of the City's utility systems.

“Customer Class”

Users with the same or similar usage characteristics are grouped into Customer Classes for purposes of cost allocation and rate setting.

“Discharge”

The Customer's metered water use multiplied by the Customer's applicable wastewater flow factor.

“Discharge Unit”

100 cubic feet of wastewater discharged to sewerage system. The quantity of wastewater shall be the amount metered, or, in the event quantity is not metered, shall be the metered water use multiplied by the wastewater flow factor.

“Domestic Wastes”

Water-carried human wastes from sanitary conveniences, including but not limited to toilets, sinks, bathtubs, and residential laundry facilities.

“Dwelling Unit”

As defined in San Francisco Planning Code Section 102.7, a room or suite of two or more rooms that is designed for, or is occupied by, one family doing its own cooking therein and having only one kitchen. For the purposes of this resolution, “Dwelling Unit” shall not include a lodging house, rooming house, motel, or hotel, as defined in San Francisco Housing Code Section 410, or a live/work unit, as defined in Section 102.13 of the San Francisco Planning Code.

“Flow Factor”

The percentage of metered water use returned to sewers and the Sewerage System as wastewater. For purposes of determining applicable charges, the percentage of water use returned to sewers is assumed to be 90% for single family Residential Users, 95% for multifamily Residential users and 90% for all other users. The General Manager may establish modified percentages by estimation or based on an inspection of the Residential User’s premises and water use. Residential Users may appeal their assigned flow factor pursuant to procedures set forth in applicable department regulations.

“General Manager”

The General Manager of the Public Utilities Commission or his or her designee.

“Hydrocarbon Oil and Grease”

Hydrocarbon oil and grease (O/G) is the measurement of that fraction of recoverable oil and grease of petroleum origin using a test specified in 40 CFR Part 136.

“Industrial Wastes”

Any solid, liquid, or gaseous wastes including cooling water resulting from any industrial, commercial, or manufacturing process or from the development, recovery, or processing of natural resources.

“Impermeable Surfaces”

A surface that prevents the land’s natural ability to absorb and infiltrate rainfall or stormwater. Impervious surfaces include, but are not limited to building or structures, roof tops, impervious concrete and asphalt, and any other continuous watertight pavement or covering. Landscaped soil and pervious pavement, including pavers with pervious openings and seams, underlain with pervious soil or pervious storage material, are not impermeable surfaces.

“Operations and Maintenance Costs”

Expenditures used for the storage, treatment, and delivery of Retail and Regional water including, but not limited to, the costs of personnel, materials and supplies, energy, and administration.

“Other Wastes”

All decayed wood, sawdust, shavings, bark, lime, refuse, ashes, garage, offal, oil, tar, chemicals, and all other substances except Sewage, Stormwater, and Industrial Wastes.

“Permeable Surface”

A surface that allows stormwater to infiltrate into the ground. Examples include pasture, native vegetation areas, landscape areas, and permeable pavement.

“Residential Customer”

A Residential Customer is the owner or customer of record of any single-family or multiple-family dwelling unit.

“Sewage”

Water-carried human wastes or a combination of water-carried human or industrial wastes from residences, commercial buildings, institutions, and industrial establishments, together with such ground, surface, storm, or other wastes that may be present.

“Sewage System” or “Sewerage System”

The City’s wastewater system including all properties (real, personal, and tangible or intangible) owned, operated, maintained by and under the jurisdiction of the Commission used for collection, treatment, and disposal of sewage, including all future additions, extensions, replacements, and improvements to the system.

“Standard Industrial Classification” or “SIC”

A coding system established by the United States government to classify businesses and industries. SIC codes are assigned based on common characteristics shared in the products, services, production, and delivery system of a business.

“Stormwater”

Surface water originating from rainfall collected in the sewerage system.

“Total Suspended Solids”

The measurement of the amount of insoluble solids that either float on the surface of wastewater or are suspended in wastewater using a test specified in 40 CFR Part 136.

“Water System”

The City's water system including all properties (real, personal, and tangible or intangible) owned, operated, maintained by and under the jurisdiction of the Commission used for the gathering, impounding, treatment, transmission, and distribution of water, including all future additions, extensions, replacements, and improvements to the system.

Unlawful Discharge

It shall be unlawful, except as herein provided, for any Customer to discharge Sewage, Stormwater, Industrial Wastes, or Other Wastes into the sewers or sewerage works of the City, unless such Customer shall pay the City its Sewer Service Charge as hereinafter provided.

Water Rates Schedules

Customer Classification

Class Determination

Upon application for new service, each Customer shall be assigned to a Customer Class based on the City's evaluation of the Customer's usage characteristics in accordance with the requirements of SFPUC Commission Resolution 23-0103 and applicable laws and regulations. Such Customer Class determination shall be based on the Customer's description of its current operation and use of the water facilities of the City. Such description shall be subject to verification by the City.

Change in Classification

Customers requiring or requesting a change in their classification shall do so in writing within 30 days of a change in operations.

Water Rates Schedules

SCHEDULE W-1A: Single-Family Residential Service

Applicable to single-family dwelling units inside and outside of the City and County of San Francisco served through a separate meter or bank of meters:

First: A Monthly Service Charge based on the size of the meter.

Meter Size	FY 2024-25 Effective 7/1/24	FY 2025-26 Effective 7/1/25
5/8 in	\$17.48	\$18.36
3/4 in	\$22.19	\$23.30
1 in	\$31.62	\$33.21
1-1/2 in	\$55.19	\$57.95
2 in	\$83.49	\$87.67
3 in	\$158.92	\$166.87
4 in	\$243.79	\$255.98
6 in	\$479.54	\$503.52
8 in	\$762.44	\$800.57
10 in	\$1,186.78	\$1,246.12
12 in	\$2,035.47	\$2,137.25
16 in	\$3,544.25	\$3,721.47

Second: A charge for all water delivered based on monthly meter reading.

	FY 2024-25 Effective 7/1/24	FY 2025-26 Effective 7/1/25
First 4 units per month*	\$10.85	\$11.40
All additional units*	\$12.05	\$12.66

*1 unit or 1 CCF (centi (hundred) cubic feet of measured water consumption is equal to 748 gallons.

SCHEDULE W-1B: Multi-Family Residential Service

Applicable to multi-family accounts within and outside of the City and County of San Francisco consisting of two or more dwelling units served through a separate meter or bank of meters:

First: A Monthly Service Charge based on the size of the meter.

Meter Size	FY 2024-25 Effective 7/1/24	FY 2025-26 Effective 7/1/25
5/8 in	\$17.48	\$18.36
3/4 in	\$22.19	\$23.30
1 in	\$31.62	\$33.21
1-1/2 in	\$55.19	\$57.95
2 in	\$83.49	\$87.67
3 in	\$158.92	\$166.87
4 in	\$243.79	\$255.98
6 in	\$479.54	\$503.52
8 in	\$762.44	\$800.57
10 in	\$1,186.78	\$1,246.12
12 in	\$2,035.47	\$2,137.25
16 in	\$3,544.25	\$3,721.47

Second: A charge for all water delivered based on monthly meter reading.

Multiple-Family Residential	FY 2024-25 Effective 7/1/24	FY 2025-26 Effective 7/1/25
First 3 CCF per month per dwelling unit	\$10.70	\$11.24
All additional units of water*	\$11.49	\$12.07

*1 unit or 1 CCF (centi (hundred) cubic feet of measured water consumption is equal to 748 gallons.

SCHEDULE W-1C: Commercial, Industrial, Public, and General Uses

Applicable to commercial, industrial, public buildings, parks, docks & ships, and other general uses within and outside of the City and County of San Francisco, excluding Wholesale customers, served through a separate meter or bank of meters.

For Street Sprinkling and Flushing when quantities are computed from records of tank wagons and billed as one amount: Schedule W-1C (no service charge to apply).

First: A Monthly Service Charge based on the size of the meter.

Meter Size	FY 2024-25 Effective 7/1/24	FY 2025-26 Effective 7/1/25
5/8 in	\$17.48	\$18.36
3/4 in	\$22.19	\$23.30
1 in	\$31.62	\$33.21
1-1/2 in	\$55.19	\$57.95
2 in	\$83.49	\$87.67
3 in	\$158.92	\$166.87
4 in	\$243.79	\$255.98
6 in	\$479.54	\$503.52
8 in	\$762.44	\$800.57
10 in	\$1,186.78	\$1,246.12
12 in	\$2,035.47	\$2,137.25
16 in	\$3,544.25	\$3,721.47

Second: A charge for all water delivered based on monthly meter reading.

	FY 2024-25 Effective 7/1/24	FY 2025-26 Effective 7/1/25
For all units*	\$11.68	\$12.27

*1 unit of water = 100 cubic feet = 1 ccf = 748 gallons

SCHEDULE W-2: Fire Service

Applicable to private fire service within and outside of the City and County of San Francisco installed and maintained according to the rules, regulations, and Specifications of the San Francisco Water Enterprise.

First: A Monthly Service Charge based on the size of the service.

Service Size	FY 2024-25 Effective 7/1/24	FY 2025-26 Effective 7/1/25
1 in	\$8.86	\$9.31
1-1/2 in	\$9.36	\$9.83
2 in	\$10.22	\$10.74
3 in	\$13.34	\$14.01
4 in	\$18.72	\$19.66
6 in	\$38.00	\$39.90
8 in	\$71.28	\$74.85
10 in	\$121.33	\$127.40
12 in	\$190.71	\$200.25

Second: If water is used for any purpose other than extinguishing accidental fires, the W-1C rates for water delivery shall apply.

SCHEDULE W-4: Docks and Shipping Supply within the City and County of San Francisco.

Applicable to special shipping service, including hose truck and other special services, from open docks through common hydrants where delivery is not through a service and meter for which the customer is responsible:

First: A Docks and Shipping Connection Charge: Schedule W-41B.

Second: A charge for all water delivered based on monthly meter reading: Schedule W-1C.

SCHEDULE W-5: Hydrant Use for Temporary Water Supply

Applicable to temporary metered service connections through fire hydrants within the City and County of San Francisco:

First: A Builders and Contractors Connection Fee: Schedule W-41B.

Second: A Meter Rental Deposit: Schedule W-41B.

Third: A Monthly Service Charge based on the size of the meter.

Meter Size	FY 2024-25 Effective 7/1/24	FY 2025-26 Effective 7/1/25
5/8 in	\$17.48	\$18.36
3/4 in	\$22.19	\$23.30
1 in	\$31.62	\$33.21
1-1/2 in	\$55.19	\$57.95
2 in	\$83.49	\$87.67
3 in	\$158.92	\$166.87
4 in	\$243.79	\$255.98
6 in	\$479.54	\$503.52
8 in	\$762.44	\$800.57
10 in	\$1,186.78	\$1,246.12
12 in	\$2,035.47	\$2,137.25
16 in	\$3,544.25	\$3,721.47

Fourth: A charge for all water delivered based on monthly meter reading: Schedule W-1C.

Fifth: Any customer who fails to report water consumption as required shall be assessed a non-reporting penalty equivalent to the cost of 25 units of water per month at the current Schedule W-1C volumetric rate.

SCHEDULE W-24: Untreated Water Service

Applicable inside and outside the City and County of San Francisco for untreated water service when the customer furnishes all facilities necessary to convey the untreated water from the San Francisco Water Enterprise’s water supply reservoirs to the customer’s point of use.

First: A Monthly Service Charge based on the size of the meter.

Meter Size	FY 2024-25 Effective 7/1/24	FY 2025-26 Effective 7/1/25
5/8 in	\$17.48	\$18.36
3/4 in	\$22.19	\$23.30
1 in	\$31.62	\$33.21
1-1/2 in	\$55.19	\$57.95
2 in	\$83.49	\$87.67
3 in	\$158.92	\$166.87
4 in	\$243.79	\$255.98
6 in	\$479.54	\$503.52
8 in	\$762.44	\$800.57
10 in	\$1,186.78	\$1,246.12
12 in	\$2,035.47	\$2,137.25
16 in	\$3,544.25	\$3,721.47

Second: A charge for all water delivered based on monthly meter reading.

	FY 2024-25 Effective 7/1/24	FY 2025-26 Effective 7/1/25
For all units of water*	\$1.89	\$1.99

*1 unit or 1 CCF (centi (hundred) cubic feet of measured water consumption is equal to 748 gallons.

SCHEDULE W-25: Wholesale Use with Long-Term Contract

For service to municipalities, water districts, and others who under long-term contracts, purchase water for resale:

First: A Monthly Service Charge based on the type and size of the meter.

Meter Size	Turbine Meters (C-701, Class II)	Electronic Meters (C-715, Class II)	Displacement Meters (C-700, Class II)
2 in	-	-	\$143
3 in	\$391	\$314	-
4 in	\$674	\$539	-
6 in	\$1,438	\$719	-
8 in	\$2,517	\$1,798	-
10 in	\$3,775	\$2,697	-
12 in	-	\$3,596	-
16 in	\$7,012	-	-

The meter types have been re-labeled to align with its respective AWWA reference. Displacement meters were previously labeled as “Compound/Disc” meters. Electronic Meters refer to “Electromagnetic/Ultrasonic” meters.

Second: A charge for water delivered based on one-month of meter readings:

\$2,469.47 per acre-foot or \$5.67 per 100 cubic foot

Third: An Untreated Wholesale Water Rate Discount Factor for customers receiving untreated water, based on monthly meter readings:

\$(169.88) per acre-foot or \$(0.39) per 100 cubic foot

Water Drought Surcharge

If the Commission, at a publicly noticed meeting, adopts a resolution declaring a stage of water delivery reduction in accordance with the Retail Water Shortage Allocation Plan (i.e., Stage 1, Stage 2, or Stage 3), the following schedule of drought surcharges shall be applied to the volumetric portion of retail water rates as of the date of the Commission resolution or any effective date designated by the Commission. For residential customers, the surcharges shall assume that the overall demand reduction is split evenly between Tier 1 and Tier 2. Each non-residential customer shall incur the percent drought surcharge uniformly. The overall required surcharge is based on the final formula: $\text{surchage (\$ per CCF)} = \frac{\text{Water Revenue Shortfall from reduced flow}}{\text{Reduced Water Flow}}$.

Water Shortage Contingency Plan Stage	Target Water Usage Reduction	Drought Surcharge on Volumetric Water Rates
Stages 1 - 3	5%	Up to 5%
Stage 4	5-18%	Up to 18%
Stages 5 - 6	18-32%	Up to 32%

The drought surcharges shall remain in effect until the Commission adopts a resolution to rescind the water delivery reduction.

Wastewater Rates Schedules

Customer Classification

Class Determination

Upon application for new service, each Customer shall be assigned to a Customer Class based on the City's evaluation of the Customer's waste discharge characteristics in accordance with the requirements of SFPUC Commission Resolutions 23-0104 and applicable laws and regulations. Such Customer Class determination shall be based on the Customer's description of its current operation and use of the collection, treatment, and disposal facilities of the City. Such description shall be subject to verification by the City.

Change in Classification

Customers requiring or requesting a change in their classification shall do so in writing within 30 days of a change in operations.

Unmetered Service

In circumstances where a Customer's discharge is not measured by metered water consumption, the General Manager is authorized to implement appropriate requirements and procedures for determining a Customer Charge consistent with the requirements of this resolution and applicable state and federal laws.

SCHEDULE A: Residential Wastewater

Applicable to Single-Family and Multi-Family Residential wastewater customers. The rates under this schedule are based upon the typical strengths for Domestic Wastes (SIC Group 4), as determined by the SFPUC. The charges based on discharge units for all Residential wastewater users are as follows:

	FY 2024-25 Effective 7/1/24	FY 2025-26 Effective 7/1/25
Monthly Service Charge	\$5.28	\$5.76
Volume per Discharge Unit*	\$17.80	\$18.72

*1 unit or 1 CCF (centi (hundred) cubic feet of measured water consumption is equal to 748 gallons.

A discharge unit shall be based on the customer’s metered water use multiplied by the flow factor and represents the quantity of metered water use returned to the sewage system as wastewater. By default, residential single-family customers are assumed to have a flow factor of 90% and multi-family residential customers are assumed to have a flow factor of 95%. Customers whose usage of water varies from typical patterns may apply for an adjusted flow factor.

SCHEDULE B: Non-Residential Wastewater

Users other than Residential wastewater users charged under Schedule A (i.e., Non-Residential), shall be charged the cost for each parameter according to the following:

	FY 2024-25 Effective 7/1/24	FY 2025-26 Effective 7/1/25
Monthly Service Charge	\$5.28	\$5.76
Volume per Discharge Unit*	\$10.09	\$10.43
PLUS Chemical Oxygen Demand (COD) per Pound	\$0.925	\$0.994
PLUS Total Suspended Solids (TSS) per Pound	\$1.808	\$1.944
PLUS Oil and Grease (O/G) per Pound	\$1.142	\$1.239

*1 unit or 1 CCF (centi (hundred) cubic feet of measured water consumption is equal to 748 gallons.

A discharge unit shall be based on the customer's metered water use multiplied by the flow factor and represents the quantity of metered water use returned to the sewage system as wastewater. By default, non-residential customers are assumed to have a flow factor of 90%. Customers whose usage of water varies from typical patterns may apply for an adjusted flow factor.

Those users whose parameter loadings of COD, TSS, and O/G are not based on periodic sampling shall be charged on the basis of standard parameter loadings established by the General Manager for each SIC code in accordance with applicable state and federal laws and regulations, and as summarized in the table below.

SIC Group	SIC Group Description	COD (lb/ Unit)	TSS (lb/ Unit)	O/G (lb/ Unit)
SIC Group 2	Hotel without Eating	1.2111	0.3496	0.1623
SIC Group 3	Nursing and Personal Care	3.9954	1.4920	0.3933
SIC Group 4	Domestic and General Uses	4.2701	1.7417	0.5306
SIC Group 5	Hotel with Eating	4.0016	1.3984	0.5369
SIC Group 6	Fish & Seafood	2.4721	0.3683	0.6243
SIC Group 7	Coin-Op Laundry	8.6588	1.0675	0.6992
SIC Group 8	Commercial and Power Laundry	9.6077	1.1299	0.7803
SIC Group 9	Sausage Manufacturing	10.0884	1.7730	0.8553
SIC Group 10	Restaurant/Kitchen, Default or with Hydro- Mechanical Grease Interceptor	7.1979	1.8916	1.5669
SIC Group 11	Wholesale Bakery	30.7208	8.5589	3.4897
SIC Group 12	Restaurant/Kitchen with Automatic Grease Removal Device or Gravity Grease Interceptor	4.4636	1.8916	0.6243

SCHEDULE C: Standard Stormwater

This schedule shall apply to all non-residential parcels, mixed use parcels, lots without wastewater service, residential parcels greater than 6,000 square feet of net parcel area and/or having more than 6 dwelling units, and/or any other parcels which do not meet the eligibility criteria for Schedule D. Net parcel area is the gross parcel area recorded with the San Francisco Assessor’s Office less any excluded area that does not drain to the SFPUC combined sewer system. The designation of a parcel as non-residential or residential will be based on the presence of wastewater accounts billed under Schedules A and B, above.

Parcels meeting the criteria of the standard stormwater component will be assessed on a per 1,000 square foot basis for all permeable and impermeable area on their property as follows:

	FY 2024-25 Effective 7/1/24	FY 2025-26 Effective 7/1/25
Stormwater Component of Sewer Bill per month		
Permeable Area per 1,000 square feet	\$0.41	\$0.67
Impermeable Area per 1,000 square feet	\$4.11	\$6.72

Permeable and impermeable areas are determined for each parcel using geospatial analysis. Customers may submit evidence of their measured areas if they believe the data for their property should be modified.

In the event that multiple accounts share one Parcel, the charge will be calculated for the total parcel area and shared equally by the number of accounts. The shares charged to each account may be adjusted with written agreement of all account holders on a Parcel.

Customers who install green infrastructure projects to manage stormwater on their property may apply for a stormwater credit and reduce their monthly charge.

SCHEDULE D: Simplified Residential Stormwater

This schedule shall apply to Single-Family and Multi-Family Residential wastewater customers with 6,000 square feet or less net parcel area and with 6 or fewer dwelling units as recorded in the San Francisco Public Utilities Commission’s billing records. Net parcel area is the gross parcel area recorded with the San Francisco Assessor’s Office less any excluded area that does not drain to the SFPUC combined sewer system. The designation of a parcel as non-residential or residential will be based on the presence of wastewater accounts billed under Schedules A and B, above.

The amounts under this schedule are based upon the average permeable and impermeable square footage of parcels within each tier group and the respective rate for parcel area as shown in Schedule C, as determined by the General Manager.

	FY 2024-25 Effective 7/1/24	FY 2025-26 Effective 7/1/25
Stormwater Component of Sewer Bill per month		
Tier 1: 0 – 1,700 square feet parcel area	\$5.04	\$8.24
Tier 2: 1,701 – 3,300 square feet parcel area	\$7.84	\$12.82
Tier 3: 3,301 – 6,000 square feet parcel area	\$11.79	\$19.27

In the event that multiple wastewater accounts share one Parcel, the assessed amount will be calculated for the total parcel area and shared equally by the number of accounts. The shares charged to each account may be adjusted with written agreement of all account holders on a Parcel.

Customers who install green infrastructure projects to manage stormwater on their property may apply for a stormwater credit and reduce the monthly stormwater component of their sewer bill.

Wastewater Drought Surcharge

If the Commission, at a publicly noticed meeting, adopts a resolution declaring a stage of water delivery reduction in accordance with the Retail Water Shortage Allocation Plan (i.e., Stage 1, Stage 2, or Stage 3), the following schedule of drought surcharges shall be applied to the volumetric portion of retail water rates as of the date of the Commission resolution or any effective date designated by the Commission. The overall required surcharge is based on the final formula: surcharge (\$ per CCF) = Wastewater Revenue Shortfall from reduced flow/ Reduced Wastewater Flow.

Water Shortage Contingency Plan Stage	Target Water Usage Reduction	Drought Surcharge on Volumetric Wastewater Rates
Stages 1 - 3	5%	Up to 5%
Stage 4	5-18%	Up to 18%
Stages 5 - 6	18-32%	Up to 32%

The drought surcharges shall remain in effect until the Commission, at a publicly noticed meeting, adopts a resolution rescinding the water delivery reduction.

Capacity Charges

Water Capacity Charge

Any customer request for a new connection, added collection or treatment capacity, or to change an existing connection shall pay a capacity charge. The customer may not sell, trade, or convey in a manner the capacity charge to another site or customer. The capacity charge does not convey or imply ownership in or of any facilities of the Water System. Customers shall pay the water capacity charges as follows:

Meter Size	Charges
5/8 in	\$2,266
3/4 in	\$3,400
1 in	\$5,666
1-1/2 in	\$11,328
2 in	\$18,129
3 in	\$36,255
4 in	\$56,650
6 in	\$113,302
8 in	\$181,281
10 in	\$283,251
12 in	\$487,193
16 in	\$849,758

The SFPUC will adjust the capacity charge by the annual change in the 20 City Average Construction Cost Index (CCI) published by ENR Magazine.

Customers subject to payment of the water capacity charge shall receive a prior use credit equal to the equivalent charge for past usage without regard to any time limit for such credit.

Customers subject to payment of the water capacity charge shall pay the fee prior to issuance of the applicable building permit. Any plan changes will result in a revised capacity charge payment.

Assessment of the applicable capacity charge will be based on the date that the SFPUC receives the final permit application and building plans.

If the customer does not make the full payment, the new or added water services will not be approved.

Wastewater Capacity Charge

Any customer request for a new connection, added collection or treatment capacity, or to change an existing connection shall pay a capacity charge. The customer may not sell, trade, or convey in a manner the capacity charge to another site or customer. The capacity charge does not convey or imply ownership in or of any facilities of the Sewer System. Customers shall pay the sewer capacity charges as follows:

SIC Groups 2-5

Meter Size	SIC Group 2	SIC Group 3	SIC Group 4	SIC Group 5
5/8 in	\$4,856	\$5,699	\$5,948	\$5,868
3/4 in	\$7,284	\$8,549	\$8,922	\$8,802
1 in	\$12,140	\$14,248	\$14,870	\$14,670
1-1/2 in	\$24,278	\$28,495	\$29,740	\$29,341
2 in	\$38,845	\$45,589	\$47,583	\$46,946
3 in	\$77,693	\$91,178	\$95,171	\$93,891
4 in	\$121,397	\$142,465	\$148,704	\$146,704
6 in	\$242,793	\$284,933	\$297,406	\$293,411
8 in	\$388,471	\$455,891	\$475,851	\$469,459
10 in	\$606,986	\$712,330	\$743,518	\$733,528
12 in	\$1,044,016	\$1,225,205	\$1,278,851	\$1,261,667
16 in	\$1,820,956	\$2,136,989	\$2,230,552	\$2,200,586

SIC Groups 6-8

Meter Size	SIC Group 6	SIC Group 7	SIC Group 8
5/8 in	\$5,619	\$6,658	\$6,898
3/4 in	\$8,426	\$9,985	\$10,346
1 in	\$14,045	\$16,643	\$17,244
1-1/2 in	\$28,087	\$33,284	\$34,490
2 in	\$44,944	\$53,252	\$55,183
3 in	\$89,884	\$106,505	\$110,365
4 in	\$140,443	\$166,414	\$172,448
6 in	\$280,887	\$332,830	\$344,895
8 in	\$449,419	\$532,526	\$551,833
10 in	\$702,216	\$832,073	\$862,237
12 in	\$1,207,810	\$1,431,167	\$1,483,049
16 in	\$2,106,648	\$2,496,222	\$2,586,712

SIC Groups 9-11

Meter Size	SIC Group 9	SIC Group 10	SIC Group 11
5/8 in	\$7,154	\$7,686	\$14,323
3/4 in	\$10,732	\$11,529	\$21,485
1 in	\$17,886	\$19,215	\$35,808
1-1/2 in	\$35,773	\$38,434	\$71,614
2 in	\$57,238	\$61,495	\$114,583
3 in	\$114,477	\$122,990	\$229,163
4 in	\$178,870	\$192,169	\$358,069
6 in	\$357,743	\$384,339	\$716,138
8 in	\$572,387	\$614,939	\$1,145,821
10 in	\$894,352	\$960,842	\$1,790,348
12 in	\$1,538,286	\$1,652,650	\$3,079,397
16 in	\$2,683,059	\$2,882,525	\$5,371,042

The capacity charge shall be adjusted on July 1st of each year by the annual change in the 20 City Average Construction Cost Index (CCI) published by ENR Magazine.

Customers subject to payment of the wastewater capacity charge shall receive a prior use credit equal to the equivalent charge for past usage without regard to any time limit for such credit.

Customers subject to payment of the wastewater capacity charge shall pay the fee prior to the issuance of the applicable building permit. Any plan changes will result in a revised capacity charge payment.

Assessment of the applicable capacity charge will be based on the date that the SFPUC receives the final permit application and building plans.

If the customer does not make the full payment, the new or added wastewater services will not be approved.

Water Service Connection and Miscellaneous Fees

SCHEDULE W-40: Meter Resizing

Meter resizing made at the customer’s request except when such resizing is required to maintain service pressure or meet flow requirements:

Charge Type	FY 2024-25 Effective 7/1/24
Decrease From an existing 2" meter to a 1-1/2" meter or From an existing 1" meter to a 3/4" or 5/8" meter or From an existing 3/4" to a 5/8" meter	\$2,075
Increase From an existing 5/8" to a 3/4" meter or From an existing 3/4" to a 1" meter or From an existing 1-1/2" to a 2" meter	
Reset 2" or smaller meter	\$1,584

The SFPUC must approve a change in meter size. These rates do not apply if the change in meter size results in the need for a change in service line size.

The Customer Service Bureau shall consider requests to resize meters and may determine necessity based on the current fixture count for the property and whether a resized meter will deliver adequate flow.

The City Distribution Division will estimate the cost for all requests for meter decrease from services 3 inches and larger to something lesser. The estimate will be either the cost to resize the meter or to install a new meter based on the age, location, and meter configuration of the existing service.

For meter resizing not covered in the above, or when any unusual conditions result in costs more than 15% of scheduled costs, the SFPUC may require the payment of actual costs.

SCHEDULE W-41A: Water Service Installation Fees

Applicable to all water customers for service installations made at the customer's request.

Water Installation Service Charges for Single Service

Service Size	Service Type	FY 2024-25 Effective 7/1/24
1 in.	Standard Service	\$13,169
1 -1/2 in.	Standard Service	\$18,503
2 in.	Standard Service	\$18,503
3 in.	Standard Service	\$52,916
4 in.	Standard Service	\$52,916
6 in.	Standard Service	\$62,117
8 in.	Standard Service	\$71,220
1 -1/2 in.	Fire Service	\$17,616
2 in.	Fire Service	\$17,616
4 in.	Fire Service	\$34,770
6 in.	Fire Service	\$41,181
8 in.	Fire Service	\$47,264
1 in.	Combination Service	\$13,169
1 -1/2 in.	Combination Service	\$18,503
2 in.	Combination Service	\$18,503
1 in.	Non-Standard Service	\$13,169
1 -1/2 in.	Non-Standard Service	\$18,503
2 in.	Non-Standard Service	\$18,503

Water Installation Service Charges for Multiple Services

Service Size	Service Type	FY 2024-25 Effective 7/1/24	
		Primary	Secondary
1 in.	Standard Service	\$10,775	\$5,258
1 -1/2 in.	Standard Service	\$12,862	\$7,039
2 in.	Standard Service	\$12,862	\$7,039
3 in.	Standard Service	\$54,991	\$45,040
4 in.	Standard Service	\$54,991	\$45,040
6 in.	Standard Service	\$64,821	\$54,991
8 in.	Standard Service	\$74,378	\$63,961
1 -1/2 in.	Fire Service	\$14,361	\$8,500
2 in.	Fire Service	\$14,361	\$8,500
4 in.	Fire Service	\$35,617	\$25,946
6 in.	Fire Service	\$42,399	\$32,716
8 in.	Fire Service	\$48,947	\$39,229
1 in.	Combination Service	\$10,775	\$5,258
1 -1/2 in.	Combination Service	\$12,862	\$7,039
2 in.	Combination Service	\$12,862	\$7,039
1 in.	Non-Standard Service	\$10,775	\$5,258
1 -1/2 in.	Non-Standard Service	\$12,862	\$7,039
2 in.	Non-Standard Service	\$12,862	\$7,039

(i) The charge for setting each additional meter on an existing or new service for residential and small commercial use, and (ii) the charge for resetting a meter on an existing usable service, shall be established in the same manner as above.

For installations not covered in the above or when, in the opinion of the General Manager, any unusual conditions may result in costs more than 15% greater than the scheduled costs, the SFPUC may require payments based on actual costs.

All pipes, valves, fittings, equipment, materials, meters, any other facilities, up to and including the outlet equipment, shall remain the property of the SFPUC, and no part of the cost will be refunded.

Additional Fees for Water Service Installations on Regulated Streets

Applicable to water service installations in Schedule W-41A when the installation is located on a street or streets identified by the SFPUC, in consultation with the Municipal Transportation Agency and the Department of Public Works, as requiring extra permitting and additional paving costs.

Fee	FY 2024-25 Effective 7/1/24
Special Streets Additional Fee	\$2,912
Moratorium Streets Additional Fee	\$4,779

Additional Fees for Water Service Installations with Backflow Inspection

Applicable to water service installations in Schedule W-41A when the installation includes a backflow prevention device, and the Water Quality Division must perform a backflow inspection. This charge will be assessed per applicant.

Charge Type	FY 2024-25 Effective 7/1/24
Backflow Inspection Fee	\$610

SCHEDULE W-41B: Water Service Connection Fees

Temporary Hydrant Connection Fee

\$292

Customers who temporarily connect to the system will be assessed a connection charge.

Temporary Hydrant Meter Rental Deposit

Customers that temporarily connect to the system, in addition to payment of a temporary hydrant connection fee, shall also pay a meter deposit of \$2,510 for a 1-inch meter and \$4,710 for a 3-inch meter **plus** a charge equivalent to 50 units (CCF) of water at the current Schedule W-1C water rate, which will be \$584.00 for FY 2024-25. The deposit will be refunded when the account is closed.

Temporary Hydrant Non-Reporting Penalty Fee

Customers that do not report meter reads according to the meter reading schedule, will be assessed a penalty fee equivalent to 25 units (CCF) of water at the effective Schedule W-5 water rate, which will be \$292.00 per every delinquent month during FY 2024-25.

Docks and Shipping Connection Fee

\$1,164

Docks and Shipping customers who connect to the system will pay a connection fee to cover the administrative costs for setting up a billing account and field work to provide connecting equipment.

Hydrant Flushing Fee

\$777

When customers use a portable meter to connect to a hydrant for potable uses which require flushing and water quality testing prior to use, a fee will be assessed for this service **plus** a charge equivalent to 13 units (CCF) of water at the current Schedule W-5 water rate, which will be \$151.84 for FY 2024-25.

After-Hours Temporary Service Water Shut Down Fee

Any customer who requests an after-hours temporary water shut down on water services 3 inches or larger will be assessed either a 4-hour standby fee of \$1,519 or an 8-hour standby fee of \$2,686.

If the work requested exceeds 4 hours, it will automatically be assessed as an 8-hour fee. This service is provided at no charge when the request is scheduled to occur during normal operating hours.

SCHEDULE W-42: Meter and Service Relocations

Customer requested meter and service relocations. The City Distribution Division shall determine the location of the meter:

Charge Type	FY 2024-25 Effective 7/1/24
Relocation of meter no more than 2' on existing 2" copper service	\$4,779
Relocation of meter no more than 2' on existing 1" copper or plastic service	\$2,912

If the SFPUC determines that the relocation of an active meter and/or service connection is required because of the operations of the SFPUC or because of modifications to a street or right-of-way by a public agency, the relocation will be done at no cost to the customer.

If the meter or service to be relocated is not active, the SFPUC may elect to sever the service connection and remove the meter without relocating it. If the SFPUC approves a customer request to relocate or remove the meter, the customer shall pay the greater of the standard charge as described above or the actual cost incurred by the Water Enterprise.

For relocations not covered in the above, or when any unusual conditions result in costs of more than 15% of scheduled costs, the SFPUC may require payment of the actual costs.

SCHEDULE W-43: Flow Restricting Installations

Except as noted, the following service fees apply to all customers except wholesale customers.

Security Deposit

The SFPUC may require a customer to make a refundable security deposit equal to the greater of two months of estimated water charges or \$123. This deposit is refundable after twelve months of satisfactory payment history or termination of service and settlement of the final bill, whichever occurs first.

Late Payment Penalty

Any charge or fee not paid within 30 days shall be subject to a late payment penalty equal to one-half of one percent (0.5%) for each 30 days or fraction thereof on the amount owed. This late payment penalty shall also apply to wholesale customers.

Returned Check Charge

\$50

A returned check charge shall be applied to any account whose payment is not honored by the customer's bank. This charge will apply to every occurrence.

Broken Lock Penalty Fee

\$25

Any customer whose service is shut-off for non-payment will be charged for the cost of a meter lock installed per Water Enterprise regulations.

Meter Test Fee

Any customer who requests to test the accuracy of their water meter will be assessed a fee based on its meter size, as follows:

Meter Size	FY 2024-25 Effective 7/1/24
5/8" Test	\$460
3/4" Test	\$480
1" Test	\$520
1 1/2" Test	\$1,060
2" Test	\$1,200
3" Test	\$1,540
4" Test	\$1,740
6" Test	\$2,040

If the meter registers more than the limit of error specified in the 'Water Rules and Regulations Governing Water Service to Customers,' the fee will be returned.

Manual Meter-Reading Fee**\$28**

Any customer who opted out of automatic meter reads will pay a manual meter-reading charge.

Lien Fee

Any account with an outstanding balance greater or equal to \$50 and which is delinquent by more than one billing cycle may be recorded as a lien against the property. A lien fee will be assessed as provided in the Administrative Code of the City and County of San Francisco.

Lead Test Fee**\$25 per sample**

At the customer's request, the Water Enterprise will provide lead testing of water samples taken from a customer's home or business. The fee covers sample bottle drop-off and pick-up, as well as the analytical tests.

Laboratory Fees

[Laboratory Fee Schedule \(sfpuc.gov\)](http://sfpuc.gov)

www.sfpuc.gov/documents/laboratory-fee-schedule

Each year, the SFPUC will adjust the fees in Schedules W-40 through W-43 by the Consumer Price Index released by the Controller's Office of the City and County of San Francisco. The Returned Check Charge, Lead Test Fee and Lab Fees will not change.

SCHEDULE W-44: Land Use and Facility Rental and Use Fees

Charges for access to or rental of lands, facilities, or right-of-way (ROW) owned by the SFPUC. Customers may lease facilities not listed here based on negotiated contracts.

Fee Name	FY 2024-25
ROW and Land Access Fee	Base Fee: \$902 Per-Day Fee: \$302
Sunol and Pulgas Facility Rental (Wedding)	\$700 per two hours
O'Shaughnessy Cottage 1 Rental Fee (per night)	\$597
O'Shaughnessy Cottage 2 Rental Fee (per night)	\$240
O'Shaughnessy Bunkhouse Rental Fee (per night)	\$303
O'Shaughnessy Meal Fee - Breakfast	\$18
O'Shaughnessy Meal Fee - Lunch	\$20
O'Shaughnessy Meal Fee - Dinner	\$36
Encroachment Permit	\$125

Each fiscal year, the SFPUC will adjust the ROW and Land Access Permit Fee in Schedule W-44 by the Consumer Price Index released by the Controller's Office of the City and County of San Francisco.

The O'Shaughnessy Rental and Meal fees will become effective at the start of the 2025 Calendar Year, on January 1st, 2025. Each calendar year, the O'Shaughnessy Meal Fees will be updated to reflect the latest U.S General Services Administration (GSA) reported meals and incidentals per diem rates for Yosemite. All other fees in Schedule W-44 will not change.

SCHEDULE W-45: Water Enterprise Regulatory Compliance Fees

Backflow Tag Fee

Backflow tag fees for customers who are required to conduct an annual inspection of backflow prevention assemblies per Article 12A of the San Francisco Health Code.

FY 2024-25 Effective 7/1/24	FY 2025-26 Effective 7/1/25
\$27	\$30

Auxiliary Water System Cross-Connection Test Fee

Buildings with auxiliary water systems required to undergo cross-connection testing.

Building Fixture Count	FY 2024-25 Effective 7/1/24
Up to 320 Fixtures	\$2,200
321 to 640 Fixtures	\$3,600
641 to 1,280 Fixtures	\$6,390
1,281 to 1,920 Fixtures	\$9,180
1,921 to 2,560 Fixtures	\$11,970
2,561 to 3,200 Fixtures	\$18,000
3,201 to 3,840 Fixtures	\$20,790
Over 3,840 Fixtures	Contact Water Quality Division

Each year, the SFPUC will adjust the Auxiliary Water System Cross-Connection Test fee by the Consumer Price Index released by the Controller’s Office of the City and County of San Francisco.

Wastewater Service Connection and Miscellaneous Fees

SCHEDULE W-46: Water Enterprise Regulatory Compliance Fees

Pretreatment Permit Application Fees

Applicable to permit applications for Batch Discharge Permits, Industrial User Permits, and Construction Site Runoff Permits (including both Erosion and Sediment Control Plans and Stormwater Pollution Prevention Plans).

Charge Type	FY 2024-25 Effective 7/1/24
Initial Fee	\$1,100
Renewal or Modification of Permit Fee	\$630

The Initial Fee will be charged to first-time customers applying for a Pretreatment Permit and will recover costs to review the application and perform the initial onsite visits and inspections. The Renewal/Modification Fee is assessed for any subsequent requests to alter their permit or to issue any required annual or bi-annual renewal.

Pretreatment Facility Re-Inspection Fee

\$470

Applicable to permitted wastewater discharge inspections exceeding the required annual or bi-annual facilities inspection(s) for:

- Batch Discharge Permits
- Industrial User Permits
- Food Service Establishment General Wastewater Discharge Permits
- Mobile Washer General Wastewater Discharge Permits

SCHEDULE W-46: Wastewater Enterprise Regulatory Compliance Fees (Contd.)

Stormwater Control Plan Review Fee

Applicable to projects regulated by the Stormwater Management Ordinance. The assessment of the Initial Submittal Fee is for the review of the Preliminary Stormwater Control Plan. The Subsequent Review Fee is assessed for the review of the Final Stormwater Control Plan and any additional reviews needed.

Project Size	Initial Submittal	Subsequent Review
Small Project (<25,000 gsf)	\$3,163	\$2,940
Medium Project (25,000 – 250,000 gsf)	\$4,184	\$3,451
Large Project (>250,000 gsf)	\$5,546	\$4,302

Each year, the SFPUC will adjust the fees in Schedules W-46 by the Consumer Price Index released by the Controller’s Office of the City and County of San Francisco.



San Francisco
Water Power Sewer
Services of the San Francisco Public Utilities Commission



525 Golden Gate Avenue
San Francisco, CA 94102-3220

sfpuc.gov



Updated June 30, 2024