

## SFPUC Green Infrastructure Grant Program

### Green Infrastructure Vendor List

The SFPUC has generated a Green Infrastructure Vendor List to serve as a resource for participants in the Green Infrastructure Grant Program. The firms included below offer a variety of services, including design, project management, construction, and ongoing operations and maintenance. By providing this sample list of companies, the San Francisco Public Utilities Commission does not endorse, warrant, or make representations or endorsements as to the accuracy, quality or completeness of the listed information, or the competency or effectiveness of listed companies. The City and County of San Francisco will not be responsible for any loss, damage, cost or expense the user might incur as a result of the use of, or reliance upon, the information and companies listed.

#### List of Firms (listed by alphabetical order)

### Contents

<b>BANCROFT CONSTRUCTION SERVICES .....</b>	<b>2</b>
<b>BAY TREE DESIGN .....</b>	<b>3</b>
<b>BLOCS DESIGN GROUP .....</b>	<b>4</b>
<b>FLETCHER STUDIO .....</b>	<b>5</b>
<b>GREENPRINT PARTNERS.....</b>	<b>6</b>
<b>INDRA DESIGNS.....</b>	<b>7</b>
<b>INTERSTICE ARCHITECTS .....</b>	<b>8</b>
<b>JENI WEBBER + ASSOCIATES .....</b>	<b>9</b>
<b>LITERACY FOR ENVIRONMENTAL JUSTICE .....</b>	<b>10</b>
<b>LOTUS WATER .....</b>	<b>11</b>
<b>MILLER COMPANY LANDSCAPE ARCHITECTS .....</b>	<b>12</b>
<b>SCAPE STUDIO .....</b>	<b>13</b>
<b>SUSTAINABLE CIVIL ENGINEERING .....</b>	<b>14</b>
<b>TERRAIN STUDIO.....</b>	<b>15</b>
<b>TS STUDIO .....</b>	<b>16</b>

## **Bancroft Construction Services**

Bancroft Construction Services is a DVBE, SBmicro, WBE, and LA County-certified CBE specializing in environmental compliance. We offer stormwater management (SWPPP), biological and cultural monitoring, staff training, and regulatory support. As a veteran-owned firm, we're committed to service, helping clients meet permitting needs and stay compliant through effective, sustainable solutions.

### **Why work with us?**

Bancroft Construction Services brings certified expertise in stormwater management, biological monitoring, and environmental compliance. As a DVBE, WBE, and CBE, we offer value-driven support for green infrastructure projects in San Francisco. Our team can assist with SWPPP, habitat assessments, and regulatory reporting, ensuring sustainability goals are met while maintaining full compliance with local and state environmental standards.

### **Tom Battaile (Senior Engineer and Program Manager), [tbattaile@bancroftcs.com](mailto:tbattaile@bancroftcs.com)**

- Mr. Battaile serves as Program Manager and Senior Engineer at Bancroft Construction Services for the Stormwater Team. His primary focus is on Stormwater Pollution Prevention Plan (SWPPP) services under the California Construction General Permit for Stormwater Discharges (CGP). He manages the development, oversight, and field implementation of SWPPP activities to ensure compliance. Mr. Battaile also supervises Bancroft's engineering consulting staff, Qualified SWPPP Developers (QSDs), and Practitioners (QSPs).

### **Andrew Price (Senior Engineer and Project Manager of Strategic Growth), 310-739-2932,**

**[aprice@bancroftcs.com](mailto:aprice@bancroftcs.com)** - Mr. Price is a licensed civil engineer with extensive experience in the field of stormwater management, namely construction stormwater compliance and NPDES support. In 2023 Mr. Price started at Bancroft as a Senior Engineer and Project Manager of Strategic Growth focused on complex project execution and business development. At his prior firm Mr. Price served as the Construction Stormwater Program Lead for Michael Baker International's Santa Ana Office and Construction Stormwater Program Lead for Michael Baker International's Santa Ana Office and was responsible for QSP inspections and oversight of 28 active construction sites across Southern and Central California.



## BAY TREE DESIGN

BAY TREE DESIGN provides collaborative design and planning services to a wide range of clients on projects that root us to the land. We strive for sustainability in our projects: environmental, community, and economic. Our work supports the renovation of our cultural construct for landscapes with healthy ecological processes, community reflection and beneficial children's spaces. We seek to make the whole greater than the sum of its parts with each project we nurture from concept to built form.

### **Why work with us?**

BTD, like SFPUC, is deeply committed to the long-term climate resilience of the Bay Area and the health and well being of the people who live here. We design spaces that offer multiple climate change-buffering and community building benefits to the communities they serve. Our focus on climate resilience paired with making invisible systems not just visible but beautiful and educational sets us up well to help SFPUC create stormwater infrastructure with layered social and environmental benefits.



**Lisa Howard (Founding Principal), 510-319-7252, [lisa@baytreedesign.com](mailto:lisa@baytreedesign.com)** - Lisa Howard is a licensed California landscape architect and Founding Principal of Bay Tree Design. She has been providing expertise in design of public, community, and institutional landscapes for over twenty-five years and has a Master's degree in Landscape Architecture and a Bachelor's in Art. In addition to her professional training she is also a Bay-Friendly Qualified Design Professional and trained in SITES. Lisa's work focuses on children's and community environments where she brings creative problem solving, clear and organized management, and collaborative thinking to each project. Her experience spans from community engagement through construction administration so she can start the process with a realistic vision and end with a well-thought out and executed design.



### **Aurore Devalay (Landscape Architect), 510-319-7256**

**[aurore@baytreedesign.com](mailto:aurore@baytreedesign.com)** - Beyond her training in landscape architecture, Aurore Devalay has a strong design background in architecture and graphic design, which she studied and worked on in her native France, where she developed a passion for historical and cultural landscapes. In 2020, Aurore received her permaculture certification which supports her interests in ecological processes and environmental restoration. Her work aims to enhance the relationship between people and nature while celebrating and revealing the majesty of our natural heritage through compassionate, inclusive, and creative solutions.



## **blocs design group**

blocs design group is a digital studio of thinkers, designers and landscape architects who work together that create impactful projects to change communities.

We're a fully remote studio that brings together the talents, knowledge, and expertise of builders, dreamers, designers, and doers across multiple disciplines and across the country to deliver a full-service design studio centered on a shared passion and desire to influence the built world and the profession.

### **Why work with us?**

We are dedicated to helping communities improve their public spaces. We have recognized a gap that exists between communities that want to make improvements to their neighborhoods through city, state and federal grant programs and the requirements of these grants. The grants applications and requirements are often too cumbersome for a typical homeowner - that's where we come in. We provide landscape architecture and design services and grant support to community members and groups.



### **Blake Tomilloso-Rhinehart (CEO/Landscape Architect), [blake@blocsdesigngroup.com](mailto:blake@blocsdesigngroup.com) -**

Blake is a licensed landscape architect in seven states (CA, TX, AZ, UT, NV, OR & CO) with 11 years of experience in landscape architecture and construction. Previously, a partner of a multidisciplinary firm focused on large-scale housing and community masterplans, and an associate at a studio focusing on public realm improvements and international developments, Blake brings his experience to create successful projects for his clients while seeking to improve the design industry. Blake has practiced landscape architecture in San Diego, Orange County, and Oakland. His past clients include homeowners, national home builders, city governments, public agencies, commercial developers, assisted living builders international development companies, and community groups.



## Fletcher Studio

Fletcher Studio is an innovative and award-winning collaborative practice providing comprehensive professional services in Landscape Architecture, Urban Design, and Environmental Planning. Founding Principal, David Fletcher, is a Landscape Architect with 30 years of project experience overseeing the design and project management of a variety of green infrastructure, urban ecosystems, public space, planning, housing, and streetscape projects. The firm is based in San Francisco.

### **Why work with us?**

We leverage technology to work faster and smarter; people, ideas and culture are the drivers of our process. From biologists and foresters to musicians and neighbors, we collaborate with a host of partners to skillfully integrate sustainable infrastructure and meaningful experiences into enduring, evolving spaces.

**David Fletcher, ASLA, PLA #5377 (Principal + Owner) [dfletcher@fletcherstudio.com](mailto:dfletcher@fletcherstudio.com); (415) 230-9114 -**

David is the founding principal of Fletcher Studio. He has practiced in landscape architecture for 30 years and has worked on the planning, design, and construction of projects ranging in scale from regional watersheds to furniture design. David's formative education in field biology and fine art created an eclectic foundation where urban ecology, pop culture, and the California landscape intermingle with the everyday.



**Lauren Ewald, ASLA, PLA #6417 (Studio Director) [lewald@fletcherstudio.com](mailto:lewald@fletcherstudio.com); 415-323-5589 -**

Lauren is Studio Director and registered landscape architect with eight years of experience designing and managing a range of projects, including large urban mixed-use districts, city streetscapes, green infrastructure, public parks, high-end resort communities, multi-family housing, and recently forest cemeteries. She is focused on creating beloved public spaces that are inventive and contextually appropriate.

## **Greenprint Partners**

Greenprint Partners is an award-winning planning, design, and engineering firm that delivers inspired green infrastructure (GI). Our team of civil engineers, urban planners, landscape designers, and communications professionals are on a mission to get the most good out of GI. We work closely with institutional property owners to help them design and install grant-funded, sustainable landscaping that improves water quality, reduces local flooding and positively impacts the community.

### **Laura Kenney (Senior Project Manager)**

**laurakenney@greenprintpartners.com; (815) 404-3281 -**

Laura leads our outreach and project development process and has a demonstrated track record of effectively guiding property owners through concept design, application and project grant award for large scale green stormwater infrastructure retrofits. She specializes in working with leadership teams at faith communities, schools, affordable housing, parks, nonprofits and more in communities of color and low income communities. Prior to joining Greenprint Partners, Laura worked on the municipal side of the planning profession, and has experience in facilities management, project management, environmental education, and non-profit outreach.

### **Jim Sparber, PE (Vice-President of Engineering)**

**jim@greenprintpartners.com; 815-529-0776 -**

Jim draws on 29 years of experience in the planning, design and construction of municipal infrastructure to lead Greenprint Partners' engineering, design, and construction management work. Jim is charged with oversight of all engineering design work from concept to completed construction. His work includes relationship management with land owners, permitting agencies, sub-consultants and contractors. He is a licensed Professional Engineer in the state of California.

### **Why work with us?**

Since the launch of the Green Infrastructure Grant Program, Greenprint has partnered with the owners of seven institutional properties in San Francisco to develop green infrastructure projects that have been awarded funding and are currently in various stages of design and construction. We are well equipped to efficiently support eligible property owners in developing a high quality application, managing the grant funds and leading all design and construction activities.





## Indra Designs

Indra Designs specializes in Regenerative Resource Management, with a focus on water. By incorporating rejuvenating tools such as green infrastructure, on-site water reuse systems, climate wise plantings, soil building, and high efficiency irrigation, Indra strives to create multi-beneficial resource management solutions. Indra merges natural systems with innovative technology to analyze, design, and oversee integrated and restorative projects.

### **Tony Madrone (Principal), [tony@indradesigns.com](mailto:tony@indradesigns.com), (415) 895-0343 (Preferred Contact) –**

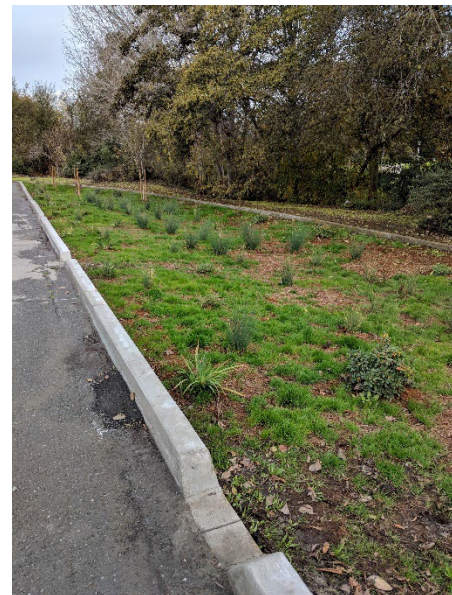
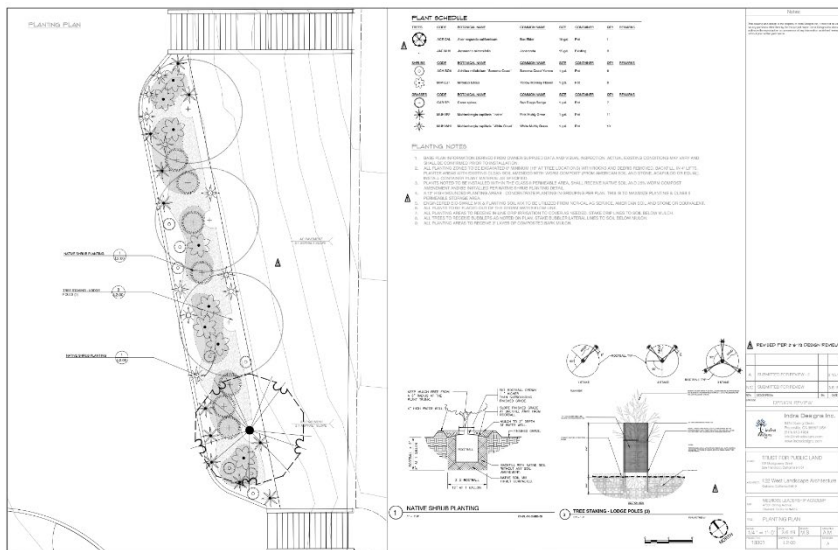
Tony Madrone is a sustainable water resource designer and analyst with extensive experience in on-site water reuse and landscape planning & construction. Having designed/built/maintained a wide array of groundbreaking water management projects throughout Northern California, Tony carries the skills and understanding to address water challenges and design innovative & impactful solutions. With over 25 years of design/build experience, Tony recognizes the importance of ensuring all plans are easily buildable and can meet client's construction budgets. Having won numerous grants for multiple water resilience programs throughout California, Tony is skilled at connecting stakeholders, envisioning programmatic impacts, and developing workflows and processes for effective program execution. Tony has successfully managed multi-million-dollar programs encompassing hundreds of smaller projects, meeting grant requirements while creating long-term benefits for the participants, communities, and watersheds. Tony is a landscape contractor, water sense partner, EPA certified water auditor, board member of California Onsite Water Association (COWA). With a passion for water conservation and sustainable business practices, Tony is dedicated to creating a healthier, and more astute approach to water resource use. Beyond sustainability solutions, Tony is passionate about backpacking, playing & writing music, gardening, alternative building, and spending time with his family.

### **Why work with us?**

Indra Designs has a team of down-to-earth experts capable of solving any GI challenge. We have GIS, CAD, engineering, landscape design, hydrology, data analysis, permitting, grant writing, and project/program management expertise. Having extensive building experience, Indra successfully designs and oversees projects by effectively communicating with contractors, ensuring construction documents are easy to understand, and providing quality control of the construction process.

### **Aimee Haasteaby (Principal), [aimee@indradesigns.com](mailto:aimee@indradesigns.com) (Preferred Contact), (209) 768-1371 –**

Aimee Haasteaby has over 15 years of water resource and GIS analysis experience. She utilizes drones, satellite imagery, and onsite field inspections to answer watershed and site-specific environmental resource questions. Aimee is a technical writer and manager for watershed-based resource management plans, water rights due diligence, permitting and grants, with awards totaling over \$10 million. She enjoys leading technical teams and components for complex, multidisciplinary projects, and solving problems within collaborative groups. Aimee is a homeschooling mother of two amazing girls, wife to an incredible chef and now a proud owner and occupant of a renovated school bus.



## **INTERSTICE Architects**

INTERSTICE Architects is a San Francisco-based, dual-discipline led firm specializing in architecture, urban design, and landscape architecture designing award-winning projects in the Bay Area for over 20 years. INTERSTICE was founded by managing principals, Andrew Dunbar and Zoe Astrachan, who work closely with clients to create meaningful spaces that engage and delight, while reflecting clients' values, sustainability goals, and vision.

### **Why work with us?**

Our architecture and landscapes are both experiential and respond to broader issues and opportunities: the use of repurposed waste stream materials, reversing the loss of bird and insect habitats, the stewardship of ancient trees, or creating minimalist solutions to complicated programs. Diversity is a hallmark of INTERSTICE's projects, clients, and collaborations. The designs that result are highly varied, yet specific, with a common objective of creating a place in the world better than when we came to it.

**Zoe Astrachan (Principal, Registered Landscape Architect)**  
**za@intersticearchitects.com, 415-285-3960, ext 102**





## Jeni Webber + Associates

We are a small, purpose-driven landscape architecture firm. We love working as designers on green infrastructure projects! Our original green infrastructure project was the SFPUC funded College Hill Learning Garden, which was designed to excite and educate children and the community about nature-based infrastructure solutions. We currently have an SFPUC funded project on the drawing boards for Visitacion Valley ES, which combined with a Mayor's Office grant will bring great community benefits.

### Jeni Webber, LA, (Landscape Architect), jeni@jeniwebber.com –

Jeni Webber LA, has had decades of experience designing, planting and caring for residential gardens, where so much of her knowledge was gained through experimentation and observation. She also has nearly two decades of experience in green schoolyard and educational landscape design. Jeni's work is informed through her science and art background and through her hands-on work experience seeing how nature positively changes people's lives.

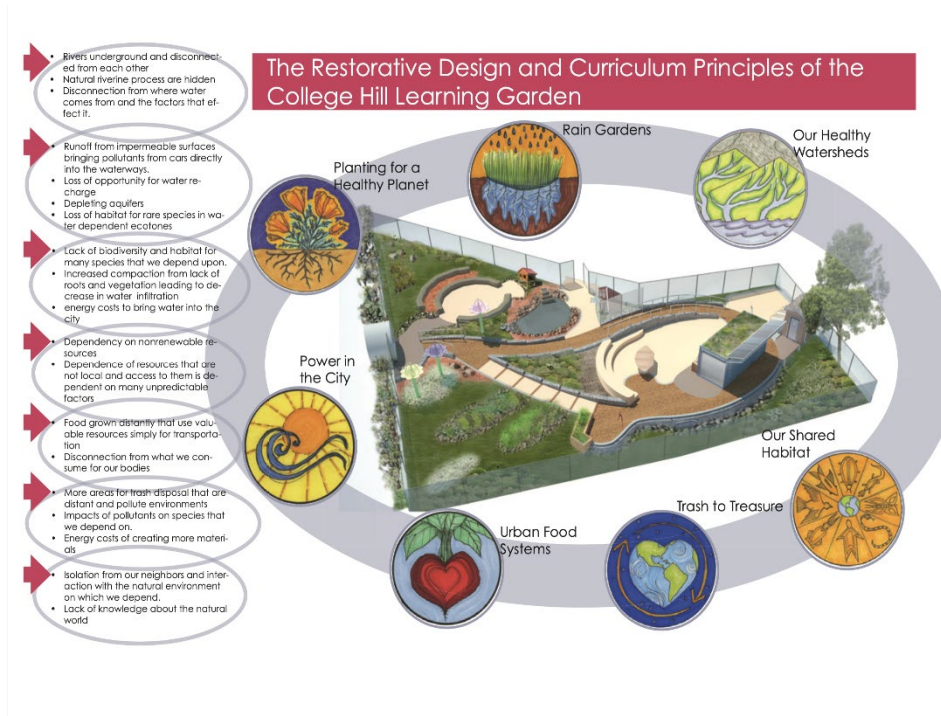
Jeni's knowledge of the necessity for climate and habitat positive design-to nurture grounded hope for the future, to help children and communities to develop environmental and climate literacy and to encourage their agency in being stewards in regenerating the well-being of our planet for all, drives her work. Jeni's is very dedicated to creating enriched natural landscapes for children where they can experience, benefit from, and bond with nature on a daily basis.

Jeni loves collaborative design processes and working on teams with other designers, artists and engineers. She is currently excited to be working with Lotus Water Engineering on the Visitacion Valley ES green infrastructure design and installation.

When Jeni is not working you can find her on the trails of the East Bay, skiing in Spring powder or working towards harmony singing in a chorus. Jeniwebber.com

### Why work with us?

We have been dedicated to organic, minimal hardscape, nature-based solutions through-out our work history. Inclusivity, creativity, science, art and invention form our work. We fully appreciate how essential it is to learn from our clients, and to encourage visioning and evaluation, for they are the experts with knowledge of the land and their desired relationship with it. We are dedicated to bringing the layered benefits of life and land regenerating infrastructure to SF school children.



## Literacy for Environmental Justice

Literacy for Environmental Justice (LEJ) was founded in 1998 by passionate Bayview-Hunters Point youth who saw the environmental injustices, pollution, and health crises plaguing their neighborhood and envisioned a greener, healthier future for their community. Since then, LEJ has worked with and for the community to fight environmental injustices in Bayview-Hunters Point such as growing and planting 250,000+ native plants, providing K-12 environmental education, and green workforce training.

### Why work with us?

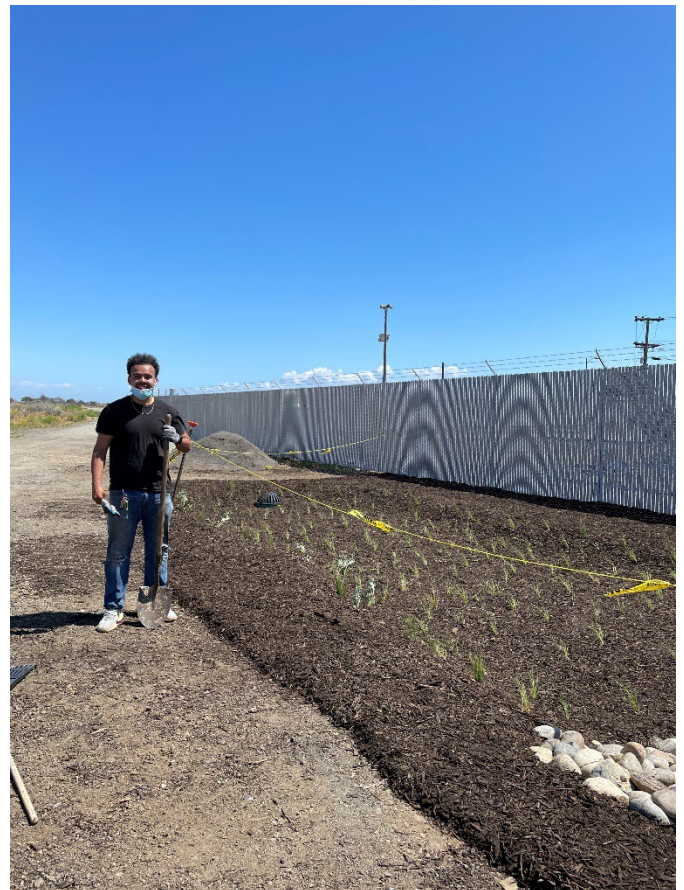
We enjoy partnering with SFPUC to bring green infrastructure to southeast San Francisco that mitigates flooding, provides wildlife habitat, and creates a beautiful and healthy environment for residents. The work we do brings jobs and environmental education to youth in the community. SFPUC has been a long time partner because they understand and support the environmental justice work that we are doing through habitat restoration and green infrastructure in Bayview Hunters-Point.

### Patrick Marley Rump (Restoration Director), patrick.rump@lejyouth.org, (415) 574-5103 –

Patrick Marley Rump has served as LEJ's Executive Director for the past 10 years and has been with the organization for over 22 years serving in many roles. He is now LEJ's Restoration Director. He is deeply passionate about LEJ's core mission especially when it comes to achieving equity in open space and providing environmental education programs for Southeast San Francisco. In his role as ED he helped LEJ secure 1.3 million dollars in funding for the Healthy Habitats and Lifestyles Project at Candlestick Point State Recreation Area (CPSRA), California's first Urban State Park. The park improvement project is more than ½ way complete and looks to restore 5 acres of bayside habitat, build 6 environmental hike, bike or paddle in camp sites, expand the park's existing community garden space and quadruple the production and foot print of LEJ's thriving native plant nursery by 2020.

### Dr. Hollis Pierce-Jenkins (Executive Director), hollis.pierce@lejyouth.org (Preferred Contact), (415) 770-1222 –

Dr. Pierce-Jenkins is an accomplished executive with in-depth knowledge and experience in both private and public sector. She has over 10 years of effective leadership in non-profit organizations, and K-12 education. Her work includes traditional schools and charter schools. In September 2008, she founded Hollis Pierce & Associates, which focused on the professional development of leaders in any organizational setting. She is a leadership coach who focuses on empowering individuals to reach their highest potential. Hollis believes that it is imperative the community rally around its youth in efforts to create global citizens equipped with the 21st Century job skills required to compete in a global economy.





## Lotus Water

Lotus Water (Lotus) is a full-service civil engineering firm in San Francisco focused on sustainable stormwater management and water-sensitive urban design. Our team of 20 technical specialists—including engineers, planners, and landscape architects—has been on the leading edge of green infrastructure (GI) and non-potable reuse guidance, integrating those principles into multi-beneficial projects that achieve triple bottom line performance for new and redevelopment sites across the West Coast.



### **Why work with us?**

With over 90 years combined expertise leading GI planning, design, and implementation in San Francisco, Lotus staff have a close connection to the environment and communities where we work. We were the technical lead for the City's first capital GI projects, developed the City's GI standard details and specifications, conducted GI contractor training programs, created GI sizing tools, and are eager to help achieve your project's sustainability, water reuse, and stormwater compliance goals!

#### **Scott Durbin, PE, LEED AP (Principal), sdurbin@lotuswater.com –**

Scott is the founder of Lotus Water. His expertise includes municipal stormwater policy development; watershed and capital infrastructure planning; GI design; hydrologic and hydraulic modeling; and water reuse. Scott led the development of stormwater design guidelines in San Francisco—developing the guidance documents for compliance on private parcels and establishing the City's collection system strategy to meet NPDES requirements through a mix of green and gray capital projects, GI grant programs, and alternative compliance policies.

#### **Shauna Dunton, PE (Principal), sdunton@lotuswater.com –**

Shauna brings over 20 years of civil engineering experience, with over 15 years leading design and project management for high-profile GI projects in recreational, institutional, commercial, and residential settings in the Bay Area. Her specialties include green building site development, integrated stormwater solutions, GI streetscape design, onsite water reuse design, stormwater compliance, and environmental permitting support. Ms. Dunton is currently leading the civil design of an institutional campus project and a waterfront park in San Francisco and is assisting several Bay Area agencies with the implementation of large-scale GI projects.



%%

The San Francisco Public Utilities Commission does not endorse, warrant, or make representations or endorsements as to the accuracy, quality or completeness of the listed information, or the competency or effectiveness of listed companies. The City and County of San Francisco will not be responsible for any loss, damage, cost, or expense the user might incur as a result of the use of, or reliance upon, the information and companies listed.

## Miller Company Landscape Architects

Established in 1979, Miller Company Landscape Architects is recognized locally and nationally as a leader in sustainable and natural design solutions for open spaces. We offer a continuum of services including Master Planning, Site-Specific Design, Construction Documentation, and on-site technical assistance during construction. Our diverse design staff of ten is experienced and creative, and includes LEED and Bay Friendly certified professionals that actively participates in professional organizations promoting the goals of sustainability.

### Why work with us?

Miller Company is committed to sustainable and community-focused design. With over forty years of experience in the Bay Area, we have a broad understanding of the needs of our neighbors and visitors alike. We place a great deal of value on the community's feedback and prioritize addressing their concerns and incorporating ideas within our designs. We often include local artists and the neighborhood's history whenever possible.



### Jeffrey Miller, ASLA, [jmiller@millercomp.com](mailto:jmiller@millercomp.com) (Preferred Contact); (415) 252-7288 –

Jeffrey Miller, ASLA, is a licensed landscape architect and landscape contractor with over forty years of experience designing and building projects in the Bay Area. Jeffrey, the founding principal of Miller Company, oversees all project design work. He works closely with San Francisco public agencies and is a resource to the Miller Company staff regarding city approval processes. He has built strong working relationships with city staff and design consultants that have resulted in the creation of many meaningful and award winning projects. Jeffrey provides leadership, technical expertise, a seasoned design sensibility, budget management, and a refined awareness of participatory processes to all of the company's projects. He is committed to guiding the firm's work in a direction that benefits active and positive social engagement.

### Maya Nagasaka, ASLA, [nagasaka@millercomp.com](mailto:nagasaka@millercomp.com) (Preferred Contact); (415) 252-7288 –

Maya Nagasaka, ASLA, has twenty years of experience in landscape architecture and project management, with fifteen of those years spent at Miller Company. As Principal and Lead Project Manager, she has worked extensively on recreational and educational spaces for children, including green schoolyards, community parks, and childcare centers. She has also served as a designer on numerous multi-family projects. Maya is experienced with a broad scale of project types, from designing for individual sites to creating a city-wide parks master plan. She is an adventurous designer and detailed expert who fully understands the particular safety codes and regulations related to playgrounds. Maya is engaged with a wide range of project types including streetscape design, multi-family development, and park planning. She is knowledgeable and is a persistent communicator assuring that projects are fully coordinated with various project stakeholders. Maya provides team leadership within our studio, oversight of project design and technical documents, and is a resource to our staff related to agency coordination and code compliance.





## SCAPE Studio

SCAPE is a women-owned, WBE Certified landscape architecture and urban design practice headquartered in New York with offices in San Francisco and New Orleans. We design and advocate for the ecologically restorative and socially engaged landscapes, urban environments, and natural infrastructure of the future. Our staff of over 90 individuals includes landscape architects, urban planners, architects, ecological designers, horticulturists, and community engagement professionals.



### Why work with us?

We plan, design, and build parks, waterfronts, plazas, master plans and urban frameworks, campuses, educational and cultural landscapes, greenways and multimodal trails, streetscapes, onstructure and interior landscapes, public libraries, wayfinding and interpretative signage, and more. SCAPE's work and leadership has been honored with the highest awards in the design field—including several national and chapter ASLA, APA, AIA, and other professional awards.

**Pippa Brashear (Resilience Principal),  
jennifer@scapestudio.com (Preferred  
Contact); (415) 841-2598 –**

Pippa Brashear, Resilience Principal, is a leading national expert on resilience planning and design for climate adaptation. She works with multi-disciplinary teams to develop landscape strategies and next-century infrastructure that integrate environmental, economic and social benefits. She leads both planning and built work teams within the firm, bringing an ecological and people-driven approach to SCAPE's projects—informed by systems thinking; an understanding of natural and nature-based systems; engineering methods; and social and environmental equity.

Pippa holds a Master's in Landscape Architecture and Master's in Urban Planning with Distinction from the Graduate School of Design (GSD) at Harvard University. She also holds a Bachelor's of Arts, cum laude, in Environmental Science and Public Policy from Harvard College.



**Will DiBernardo (Design Director), jennifer@scapestudio.com (Preferred  
Contact); (415) 841-2598 –**

Will DiBernardo, Design Director, is a project leader who brings diverse experience in landscape architecture, master planning, urban design and industrial design, with particular expertise in design applications of 3-D modeling and information systems.

Will holds a Master of Landscape Architecture from Harvard University, where he was awarded the Penny White Traveling Fellowship, and a Bachelor's in Landscape Architecture from Cornell University, where he graduated with Honors in Research and the school's ASLA Honor Award.

## Sustainable Civil Engineering

Sustainable Civil Engineering (SCE) - [www.sustainable-ce.com](http://www.sustainable-ce.com) We are a civil engineering firm with a focus on sustainability. Our creative designs minimize environmental impact while adhering to project budgets and timelines. We engage the built environment, as well as our communities through a “green” approach, project management, and civil engineering services that meet sustainability objectives. Our clients find that our work is economically viable, aesthetically pleasing and eco-friendly. Additionally, Sustainable Civil Engineering is a certified California Green Business.

### Why work with us?

In order to successfully reach sustainability goals, at both community and city-wide levels, it is critical that private, public and non-profit organizations work together. For example, the grants that public agencies provide promote water stewardship, urban greening, and other environmental friendly measures are making a difference not only by developing sustainable environments, but also by engaging communities who receive assistance from businesses like mine.



**Jorge Romero-Lozano, PE. LEED AP, PMP; [jrl@sustainable-ce.com](mailto:jrl@sustainable-ce.com); (415)-218-7592** is a licensed civil engineer in California and Nevada, as well as a Leadership in Energy and Environmental Design Accredited Professional (LEED AP) from the U.S. Green Building Council, and a certified Project Management Professional (PMP) from the Project Management Institute (PMI.) He has over 30 years of civil engineering experience; is fluent in English, Spanish and German;; and has worked on civil engineering projects around the world.



## **Terrain Studio**

Terrain is a full-service Bay Area landscape architecture, planning and urbanism firm with offices in Oakland, Houston and Shanghai. The firm was founded in 2011 by Minhui Li, PLA, LEED AP and is a majority Asian / Woman-owned firm. In 2014 Scott Slaney, FASLA, PLA joined Minhui and Terrain Studio renewing a valued twenty (20) year working relationship started in 2001 when Scott was Managing Principal of SWA Houston and subsequently SWA Shanghai and Principal within SWA Sausalito.



### **Why work with us?**

Terrain brings to SFPUC and the Green Infrastructure Program the knowledge, ideas, expertise, resources, experience and breadth of practice to be effective in the design through construction observation of projects large and small throughout the city's diverse urban and natural environments. We are experienced in being prime consultants and in leading clients, communities and design teams towards innovative and cost-effective solutions while managing project schedules and budgets.

**Scott Slaney, FASLA, PLA, (Principal); 1611 Telegraph Avenue, Suite 801 Oakland, CA 64612; sslaney@terrainstudio.net (Preferred Contact); (415) 979 0788** - Throughout his 46 years of practice in Scott has explored opportunities to make a difference in the world through the art and science of landscape architecture, planning and urban design. Whether at the scale of a city or garden he explores solutions that intersect art and sustainability characterized by clarity of idea and crafted execution. His work has been recognized with 42 professional awards at local, state, national and international levels. He is a 1976 graduate of Texas A&M University with a Bachelor of Science in Landscape Architecture and a licensed Landscape Architect in the States of Texas and New York.

**Minhui Li, ASLA, PLA, LEED GA, (Principal); 1611 Telegraph Avenue, Suite 801 Oakland, CA 64612; mli@terrainstudio.net (Preferred Contact); (415) 979 0788** - Minhui is passionate about creating unique and memorable urban spaces that emphasize aesthetic value and functionality. She is particularly dedicated to designing ecological and human-friendly spaces that respect a site's natural functions and cultural contexts. She has been acknowledged with professional awards from the Urban Land Institute and the American Society of Landscape Architects at the local, state, national, and international levels. Minhui has lectured at the University of Maryland and has been published in Community Design magazine





## TS Studio

TS studio is a landscape architecture and urban design firm based in San Francisco. Our design is process and research based, with an emphasis on refinement of craft and transforming concepts into memorable places. We believe in good design for all and public landscapes that foster inclusivity and connectivity. Our designs envision a better world and provide a framework for resiliency.

### Why work with us?

TS studio is a local firm with expertise in sustainable and resilient Bay Area landscapes. We work with a variety of public and private clients with emphasis on community engagement and a collaborative design process. Our projects integrate green infrastructure systems that are site specific and focused on cultural and ecological benefits for the communities that live, play and work in them.

**J. Lee Stickles, FASLA, PLA, (Principal);**  
**lstickles@tsstudio.org (Preferred Contact); (415) 420-8408** - J. Lee Stickles, the founder of TS studio, is a landscape architect and urban designer with 22 years of professional experience. Her work ranges from parks, playgrounds and public waterfronts, to on-structure roof gardens and mixed-use projects. Stickles thrives on complex urban projects that connect us to place and promote positive change at any scale.

